



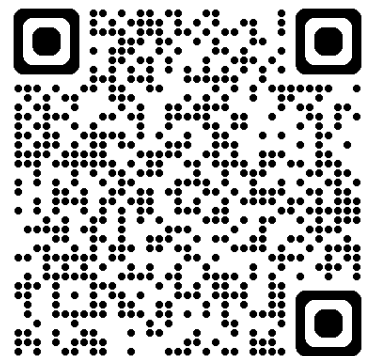
Harrier Mini Camera

Quick Start Guide

Version 0.1

Address: QRO Solutions
Woodford Grange Farm
Grange Road
Islip
Northamptonshire,
NN14 4JB

Web: qrosolutions.co.uk
Telephone: +44 (0) 1604 781 890
Email: info@qrosolutions.co.uk



Camera Installation

Tools

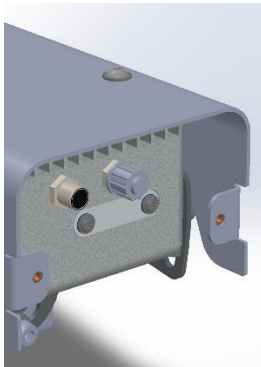
To adjust the camera mounting, you will need the following tools:

- 4.0mm Allen key
- 8mm spanner or socket
- 13mm spanner or socket
- T10 Torx Driver

Installing or Removing the SIM Card

Accessing the SIM Card Slot

Remove the rear plate by unscrewing the two large thumbscrews.



This will reveal an aluminium panel secured with two Torx screws—this is the SIM card cover.

Unscrew the Torx screws and keep them, along with the blue washer, in a safe place.

Inserting the SIM Card

The SIM card connector is a push-push type.

Insert the SIM card into the slot until you feel a click.

To remove the SIM card, push it again, and it will eject.

A thin tool may be required to assist with inserting or removing the card.

Reassembling the Unit

Once the SIM card is securely installed, reattach the SIM card cover and fasten the Torx screws.

Finally, replace the rear plate and secure it with the thumbscrews.

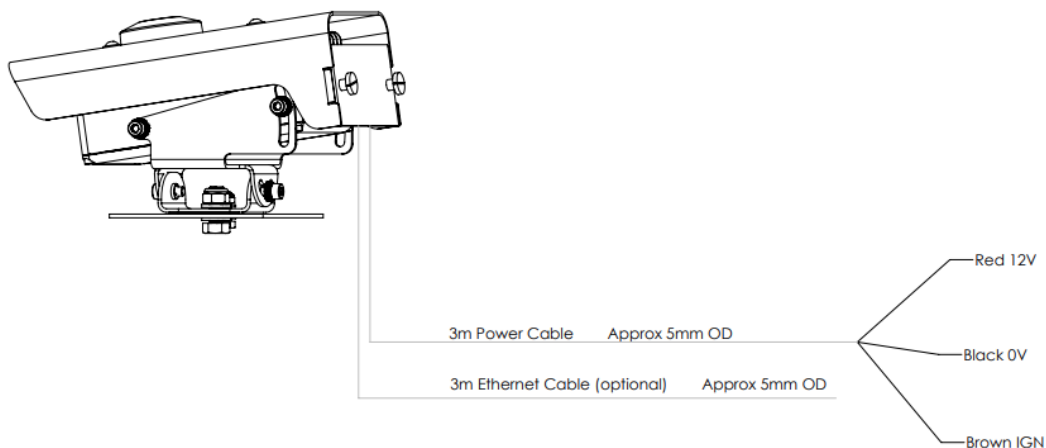
Wiring

The camera is supplied with a 3 way, 3A power cable.



For Mobile applications the power wires should be connected to the vehicle power loom via an E-Marked power conditioner or similar approved device; QRO can advise if a suitable part is not available for other devices in the vehicle. The Ignition line is a low current 12V signal; present when the vehicle ignition is ON.

For Static operation the ignition line can be tied to 12V but care should be taken to minimise power cycles on this line; shutting down wherever possible in a controlled manner from NEWA prior to removing the power.



Camera Positioning Guidelines (mobile)

Optimal Placement



The camera should be mounted facing rearwards, positioned towards the passenger side of the vehicle.

Rotate the camera slightly outwards towards the driver side lane to optimize its field of view.

The passenger side edge of the lane the car is in should appear in the bottom right hand corner of the field of view of the camera

Antenna Interference Considerations



To minimize interference, avoid placing the camera too close to other system antennas.

Maintain a minimum gap of 150mm from GPS/cellular antennas.

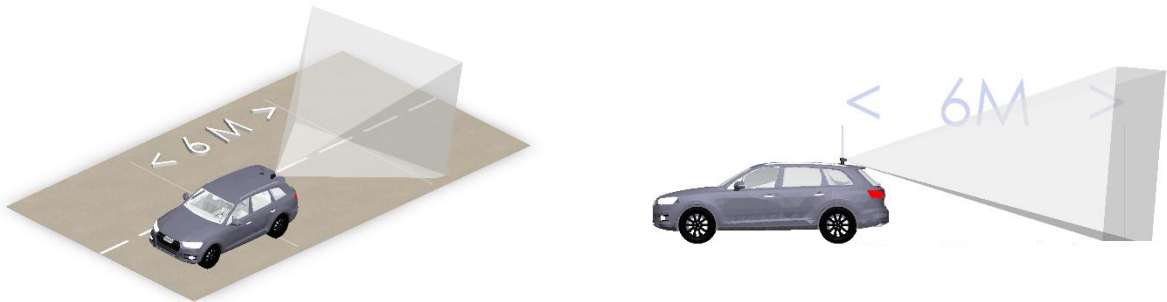
For other frequency bands, consult the antenna manufacturer for specific spacing requirements.

Calibration Guidelines (Using NEWA)

When viewing the camera feed in NEWA, an object 6m away from the camera lens on the floor should be visible at the bottom of the screen.

Position the camera far enough back to ensure that no part of the vehicle is shown in the captured image.

Refer to the illustrations below for proper positioning.



3 axis mounting

The camera is supplied with a 3-axis mounting bracket, offering flexibility for mounting on various surfaces, including vehicle roofs. 2 holes (for M8 and M5 bolts on 17mm centres).

